

The Webster Album



The Webster album was once a fine album with treasured photographs within. As you can see it is now in poor condition and only shows glimpses of its former glory. The page edges were gilt, many of the pages were colourfully illustrated and the photographs span from possibly the 1860s to the turn of the century.

The album and many loose photographs have been passed down from Elizabeth Downie nee Webster to her daughter Dorothy then another generation to her daughter Caroline Hollow nee Judd. The photos may have belonged to Elizabeth's mother originally as there seem to be some from the 1860s. Elizabeth was born in 1866 so it is very possible the photos came from her mother Janet Webster nee Heatherwick.

The photographs have all been scanned individually and I have included them in the order they are found in the album. The order will have changed over the years so it is probably not chronological now. I have scanned both back and front of the photos; unfortunately there are very few notes on them to identify the individuals.

The photographer's names and studios are important as these details can give clues to the age of the photographs. The clothes worn and hair and hat styles also can be used to date the photos. I have included dates for many of the photographs, these were date ranges for photographic studios found in a book called *The mechanical eye in Australia: photography 1841-1900* / Alan Davies & Peter Stanbury. (TME).

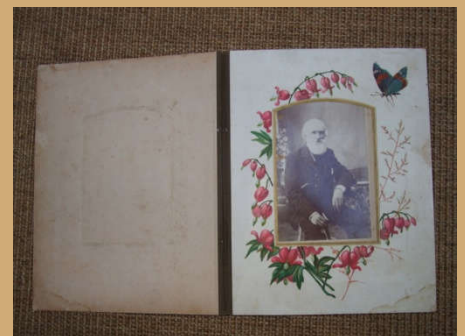
I have included all the images from the album in the order and then the images of the loose photographs follow. I have added notes but it is a work in progress to identify the individuals.

Types of format:

The pictures come in a range of formats which also can help age a photographs.

Cabinet prints – These are the biggest photos and are 4.5 by 6.5 inches (11.5 x 10.5 cm) and were produced between 1866 and 1905. They were not commonly produced until 1880 and ceased by 1905.

Carte de visite (cdv) 1857 – 1890. The most common form of photograph in the 19th century, they measured 2.5 x 4.5 inches (6.3 x 10.5 cm). Cdvs from the 1860s had square corners and were on thinner card. In the 1870s began to be produced on thicker card, by the 1880s they had rounded corners and were on shiny coloured card.



The Webster Album

Tintypes 1852 – 1900. The ones in this album are called gems, they are smaller pictures inserted in a cdv size card, but some are smaller. They were cheaper to produce than the cdvs.

Postcards 1905 – 1840s Took over from the cdvs as the most popular form of cheap photographs. The examples here are amongst the Loose photos.

Studio portraits – These are larger images, and became popular in the early 20th century.

The Family.

Parents:

Arthur Webster (1823 – 1910) married Janet Heatherwick (1831 – 1907)

Children:

Janet (Jessie) b 28 Mar 1855 married William Fawcett, no children

Jane b 27 Jul 1857 married John Rudd

- **Arthur John Rudd**, b. 1878 at Mitiamo, VIC, AUS, d. 1952 at Korumburra, VIC, AUS
- **Joseph Rudd**, b. 1879 at Huntly, VIC, AUS, d. 1880 at VIC, AUS
- **George Rudd**, b. 1881 at Deniliquin, N.S.W., AUS, d. Jul 1932 at Newport, VIC, AUS
- **Jane Rudd**, b. 1882 at Deniliquin, N.S.W., AUS, d. 1942 at Yarraville, VIC, AUS
- **Mary Rudd**, b. 1883 at Deniliquin, N.S.W., AUS, d. 1884 at Deniliquin, N.S.W., AUS
- **John (Jack) Rudd**, b. circa 1888, d. 1959 at Preston, VIC, AUS
- **Jessie Rudd**, b. 19 Sep 1890 at Fingal, TAS, AUS, d. 1963 at Melbourne, VIC, AUS
- **Ellen Rudd**, b. 11 Nov 1893 at Fingal, TAS, AUS, d. 1917 at Footscray, VIC, AUS
- **Isabella Ivy Rudd**, b. 29 Feb 1896 at Fingal, TAS, AUS, d. 1964 at Korumburra, VIC, AUS
- **Alexander Rudd**, b. 18 Jun 1900 at Queenstown, TAS, AUS, d. 8 Jan 1901 at Queenstown, TAS, AUS
- **Agnes Rudd**, b. 15 Mar 1902 at Queenstown, TAS, AUS, d. 1957 at Footscray, VIC, AUS

James b 25 Dec 1859 married Annie Marie Hendy

- **James Thomas Webster**, b. 1883 at Bourke, N.S.W., AUS, d. before 15 Nov 1891 at Raywood, VIC, AUS
- **Robert L Webster**, b. 1886 at Barrington, N.S.W., AUS, d. Jun 1893 at Raywood, VIC, AUS
- **Gertrude M Webster**, b. 1888 at Bourke, N.S.W., AUS
- **Thomas G Webster**, b. 1892, d. before 26 Oct 1896 at Raywood, VIC, AUS
- **Arthur Horace Webster**, b. 1900, d. Mar 1919 at Raywood, VIC, AUS

Margaret b 18 Mar 1862 married John Ferguson and Henry Johnson

- **Jessie Barbara Ferguson**, b. 1882 at Sandhurst, VIC, AUS, d. 1955 at Fitzroy, VIC, AUS

Mary (Polly) b 10 May 1864 Married August William Hansen 1887 d 11 Mar 1899

- **Edith Mary Hansen**, b. 1888 at Williamstown, VIC, AUS
- **James Augustus Hansen**, b. 1889 at Williamstown, VIC, AUS, d. 25 Sep 1971 at Geelong, VIC, AUS
- **Frederick William Hansen**, b. 1891 at Williamstown, VIC, AUS, d. 20 Feb 1899 at Williamstown, VIC, AUS
- **Hannah Agnes Hansen**, b. 1894 at Williamstown, VIC, AUS
- **Arthur Webster Hansen**, b. 1896 at Williamstown, VIC, AUS, d. 9 Oct 1979 at VIC, AUS
- **Jessie Christina Hansen**, b. 7 Mar 1899 at Williamstown, VIC, AUS, d. 9 Mar 1899 at Williamstown, VIC, AUS

Elizabeth b 10 Oct 1866 married Thomas Michael Downey and William Sheppard

- **Elizabeth Jean Downey**, b. 1883 at Deniliquin, N.S.W., AUS, d. 1960 at Melbourne, VIC, AUS
- **Arthur Downie**, b. 1889 at Collingwood, VIC, AUS, d. 1951 at Qld, AUS

The Webster Album

- **Henry Francis (Harry) Downie**, b. 1892 at Deniliquin, N.S.W., AUS, d. 3 Oct 1949 at Mooroopna, VIC, AUS
- **Dorothy May Downie**, b. 7 Jan 1896 at Hay, N.S.W., AUS, d. 6 Oct 1971 at Dunolly, VIC, AUS
- **Jane E B Downey**, b. 1898 at Deniliquin, N.S.W., AUS, d. 1899 at Deniliquin, N.S.W., AUS
- **Ruby M Downie**, b. 1900 at Deniliquin, N.S.W., AUS, d. 1929 at Hay, N.S.W., AUS
- **Leslie Martyn Downie**, b. 1905 at Deniliquin, N.S.W., AUS, d. 1975 at Dunolly, VIC, AUS
- **William Sheppard Downie**, b. 3 Dec 1909 at Deniliquin, N.S.W., AUS, d. 11 Sep 1943 at Burma.

Agnes b 10 Jan 1869 Married James Munro McDonald

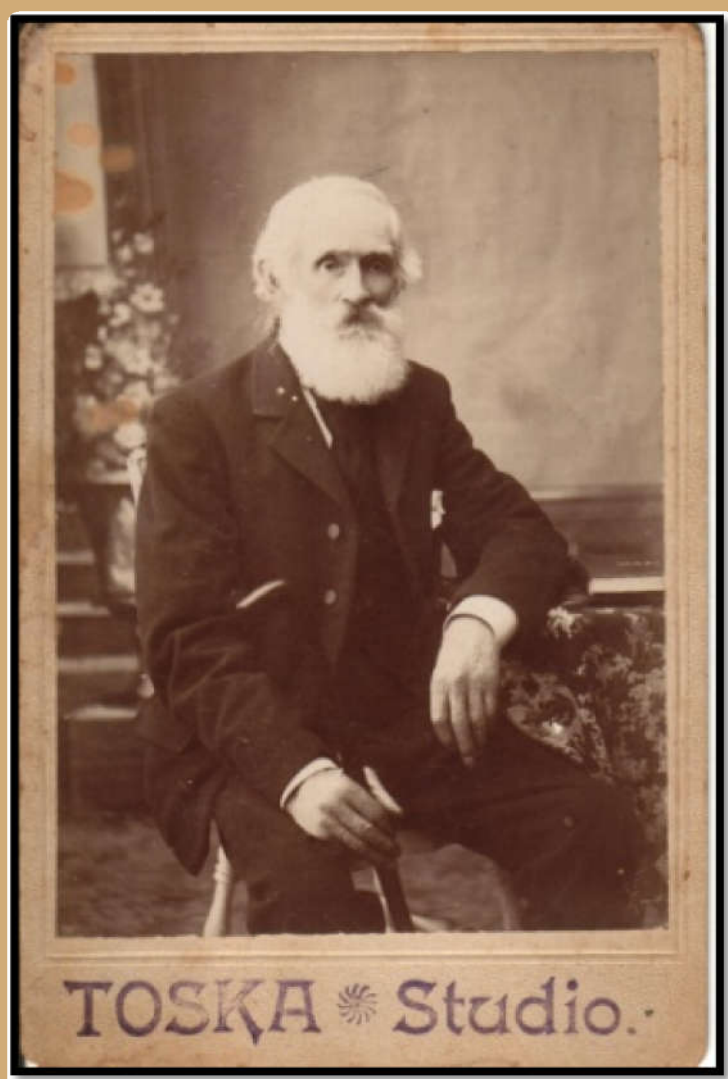
- **Janet Agnes McDonald**, b. 1895 at Footscray, VIC, AUS, d. 27 Mar 1986 at Melbourne, VIC, AUS
- **Isobel Myrtle McDonald**, b. 1899 at Footscray, VIC, AUS, d. 1976 at Footscray, VIC, AUS

Arthur b 30 Aug 1871 not married

Isabella Webster b 30 Jul 1875 married George Herbert Godier 6 Dec. 1897.

- **John Francis Godier**, b. 26 Jul 1898 at Neilborough, VIC, AUS, d. 2 Dec 1918 at at Sea off Mudros, Greece
- **James Godier**, b. 1901 at Raywood, VIC, AUS, d. 1948 at Parkville, VIC, AUS
- **George Godier**, b. 13 Feb 1905 at Neilborough, VIC, AUS, d. 24 Feb 1965 at Yarraville, VIC, AUS
- **Noel Godier**, b. 1908 at Raywood, VIC, AUS, d. 15 Apr 1998 at Melbourne, VIC, AUS
- **Dorothy Isobel Godier**, b. 1911 at Footscray, VIC, AUS, d. 11 Mar 1996 at Melbourne, VIC, AUS

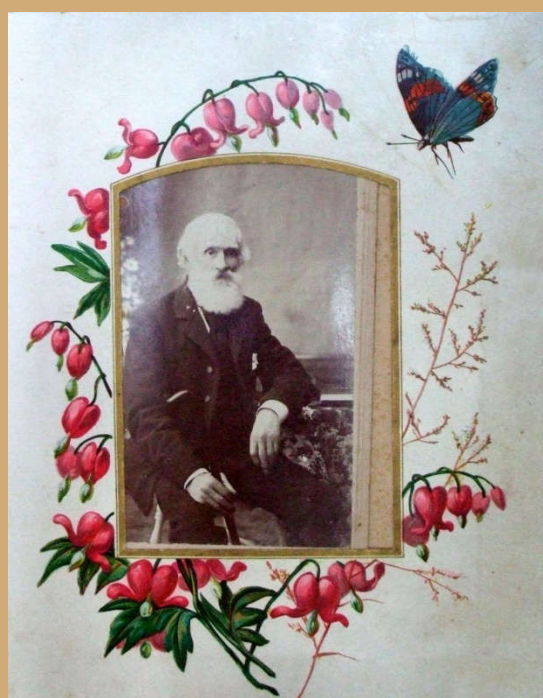
The Photographs



A1. Cabinet print 16cm x 10.5 cm

Toska Studio on front (1897 – 1900) Sydney or Qld, plain back.

This photo has pride of place in the album suggesting it is the patriarch of the family, perhaps Arthur Webster (1823 to 1910)



The Webster Album



A2. Cabinet print 16.5 x 10.6 cm

A Marks & Co Elgin St. Carlton (1888 – 1900) on front, plain back.

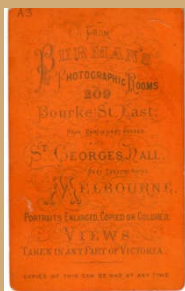
The Webster Album



A3. Cdv

Burman Photo 209 Bourke St East & St Georges Hall (1878 – 1888) back printed

“For Agnes” written on the front



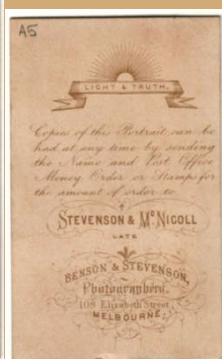
A4. Cdv

Chuck Sandhurst Gold Medalist Williamson St. London (1888 – 1889), back printed



A5. Cdv sq. cnrs.

Stevenson & McNicoll Photo 108 Elizabeth St Melbourne (1880 – 1888), back printed.

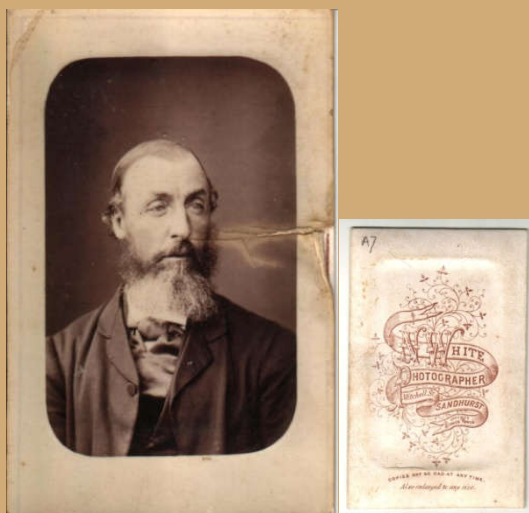


A6. Cdv

Front plain, back printed Jas Fiddes, Wagga Wagga (1871 – 1896) hand written '1564' TME says (1892 – 1896)



The Webster Album



A7. Cdv sqr cnrs

Front plain, back printed N White photographer Mitchell St Sandhurst. (1875 - 1891)

Photo coming off the card



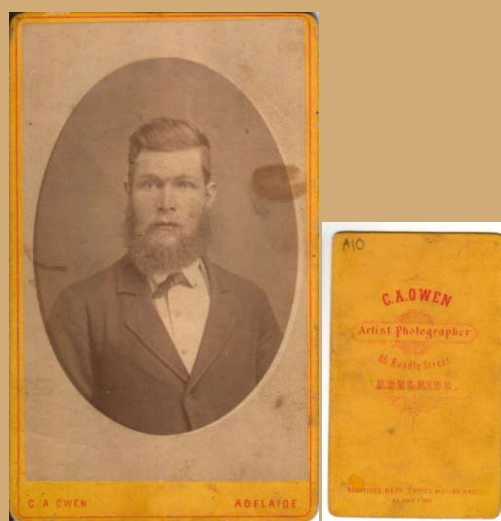
A8. Cdv

Front Bent photo Pall Mall Sandhurst (1881 - 1883), back printed



A9. Cdv

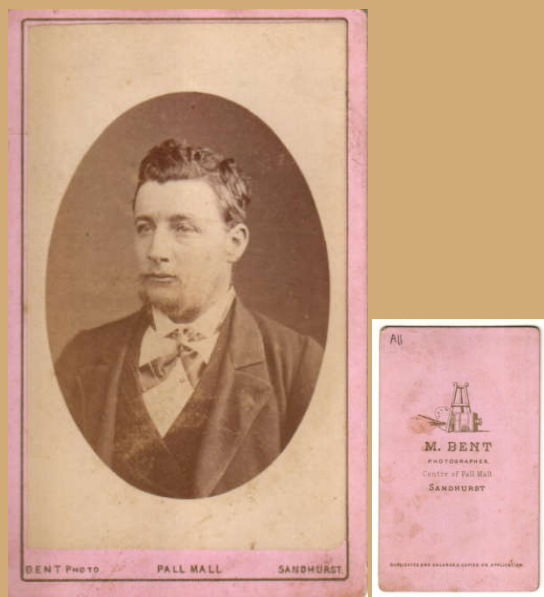
Front Bent Photo Pall Mall Sandhurst (1881 - 1883), back printed



A10. Cdv

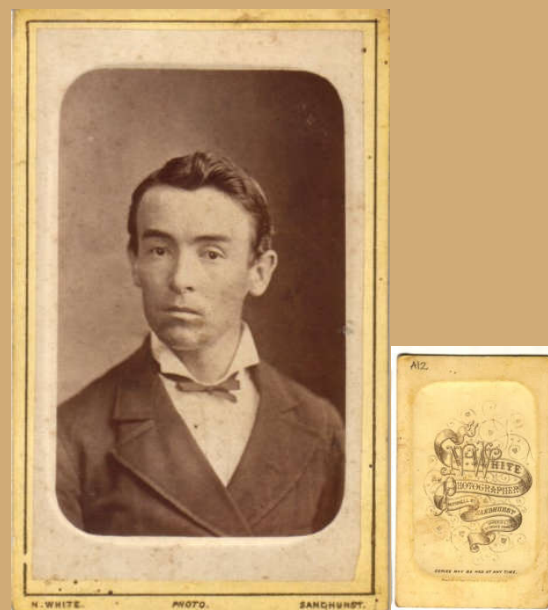
Front C A Owen Adelaide, back printed C A Owen 85 Rundle St. Adelaide (1878 - 1881)

The Webster Album



A11. Cdv

Front Bent Photo Pall Mall Sandhurst (1881 – 1883), back printed



A12. Cdv

Front N White photo Sandhurst, back printed
Nicholas White photographer Mitchell St
Sandhurst. (1875 – 1891)



The positioning of these photos in the album suggests they could be brothers; perhaps the Webster brothers?

The Webster Album



A13. Cdv

Front plain, back printed Chevalier Pall Mall Sandhurst, this is identical on A 13, A14, A32 (1865 – 1868)



A14. Cdv

Front plain, back printed Chevalier Pall Mall Sandhurst, this is identical on A 13, A14, A32 (1865 – 1868)



A15. Cdv

Front plain print may be hidden by piece of album stuck to it, back plain looks like same person in A15 and A16



A16. Cdv sqr cnrs

Front plain, back printed D Gordon photo St Clairtown (village near Kirkcaldy Scotland) looks like same person in A15 and A16

The Webster Album



A17. Cdv sqr cnrs

Front Bent photo Sandhurst (1881 – 1883), back printed



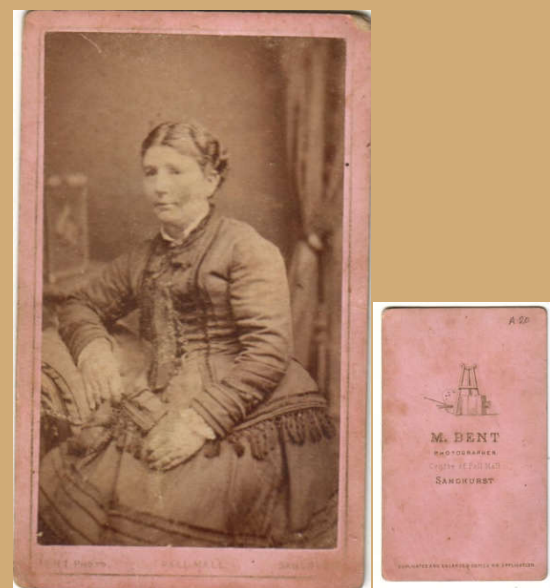
A18. Cdv sqr cnrs

Front Batchelder & Co 41 Collins St East. Melbourne, back printed Batchelder & Co 41 Collins St East. Melbourne (1867 – 1891)



A19. Cdv, sqr cnrs

Front plain, back printed J W Burrows Photo Artist next to Commercial Hotel Pall Mall Sandhurst late Chevalier. J W Burrows Photo Artist next to Commercial Hotel Pall Mall Sandhurst late Chevalier (1870s)



A20. Cdv

Front Bent Photo Pall Mall Sandhurst (1881 – 1883), back printed

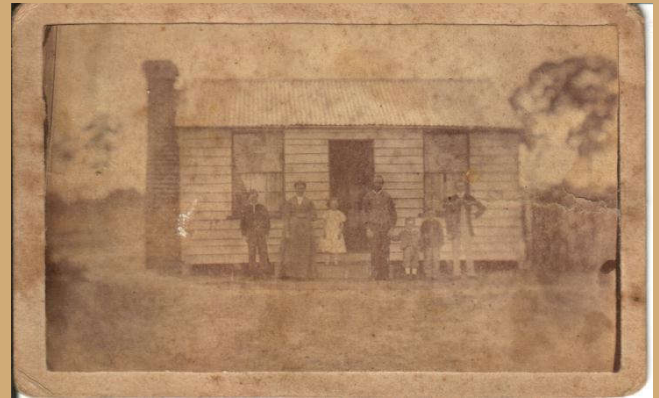
Could be the same woman as in A23. I believe it is Jane (Webster) Rudd.

The Webster Album



A21. tintype gem on Cdv size card

Front plain, back plain



A22. Cdv

Front plain, back plain a primitive type of card
Children in age sequence - b b g b bThese two cdvs when magnified give a better idea
of the people. In A22 the father is a balding

A23. Cdv

Front and back plain, mother looks like woman at
A20.bearded man, wife has hair parted in middle.
These may help with identity eventually.James Webster had four boys and a girl and the
order fits if the girl is the middle child.The A23 cdv responded better to enlargement and
the result helps show the similarity between the
mother and the image in A20.The age sequence in the photo seems to be g g b b
g g g which does not fit any of the Webster girls'
families. It could be that the photo contains
children from two families. The adult looks very
like Jane Rudd nee Webster.

The Webster Album



A24. Cabinet print

Front Vandyck studios 3 Bourke St E. Melbourne (1887 – 1888) next to Gen. Post Office, back plain



The Webster Album



A25. Cabinet print

Front plain, back plain

The Webster Album



A26. Cabinet print

Front Yeomans 116 Bourke St E. Melbourne (1895 – 1920) back plain

A wedding photo, flowers, display of rings. I believe this is likely to be Caroline Gaye and Kevin Judd.

The Webster Album



A27. Cabinet print

front M.J. Scallan 38 Loop St, between Strans & Waterkant Sts. Cape Town back plain with "To Mrs Webster From Victoria Campion April 15th 1896" written in ink.

The Webster Album

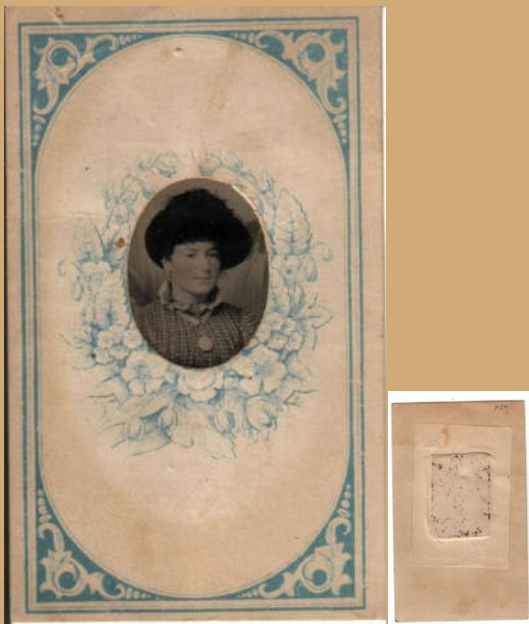


A28. Tintype gem on Cdv card

Printed design on front, plain on back



The Webster Album



A29. Tintype gem on Cdv card
Printed design on front, plain on back A29 and A30
identical presentation



A30. Tintype gem on Cdv card
Printed design on front, plain on back A29 and A30
identical presentation

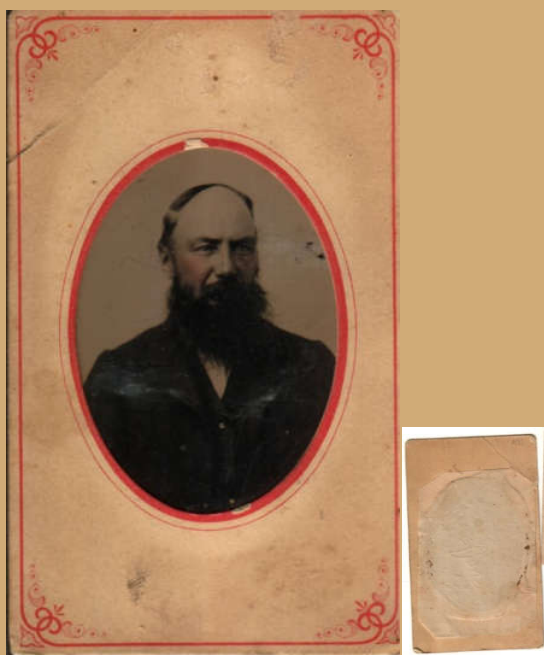


A31. Cdv
Front W.H. Smith Mollison St. Kyneton back ,
printed



A32. Cdv
Front plain, back printed Chevalier Pall Mall
Sandhurst, identical to A 13, A14, A32 Chevalier
Pall Mall Sandhurst (1865 – 1868)

The Webster Album



A33. Tintype gem on Cdv card

Front plain, back plain beard unkempt, suggest 1880s



A34. Cdv

Front plain, back printed British and American Portrait Company Spike, Kerton & Stubbs Proprietors Cdv only in TME



A35. Tintype on small card

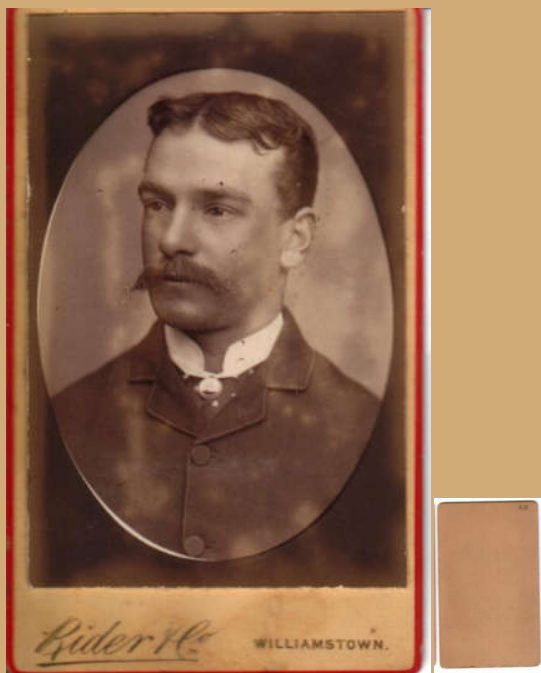
Front plain, back plain



A36. Tintype on small card

Front plain, back plain

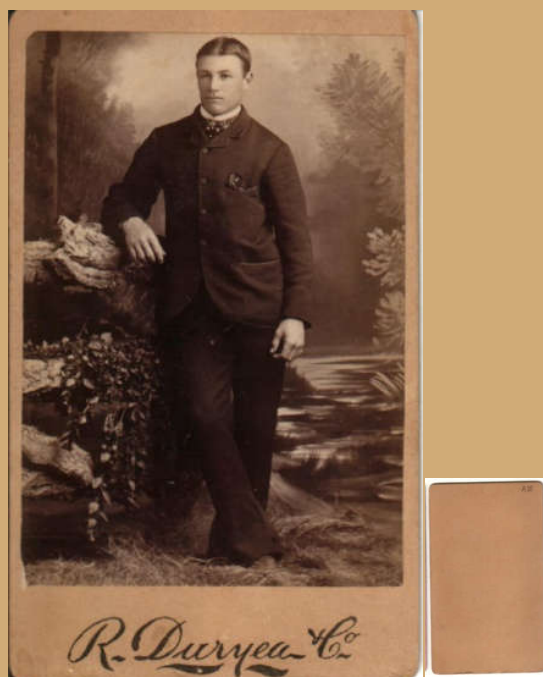
The Webster Album



A37. Cdv

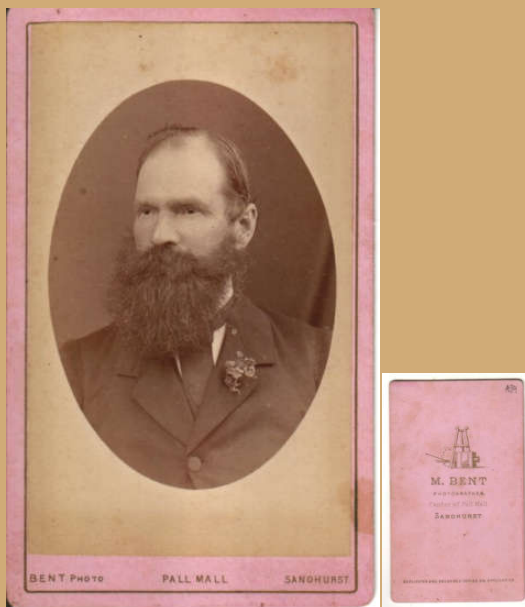
Front Rider & Co Williamstown (1863 – 1891), back plain

This could be Augustus Hansen husband of Mary Webster, see later Webster photographs.



A38. Cdv

Front R Duryea & Co, back plain R Duryea & Co High St Echuca (1888 – 1891)



A39. Cdv

Front Bent photo Pall Mall Sandhurst (1881 – 1883), back printed pink beard unkempt, suggest 1880s



A40. Cdv

Front R Yeoman 169 Bourke St East Melbourne (1885 – 1899) back plain black

Could it be Arthur Webster (21 in 1892) or James McDonald (married Agnes in 1894)?.

The Webster Album



A41. Cdv

Front Rider & Co Williamstown (1863 – 1891), back plain



A42. tintype gem on Cdv card

Front decorative design, back plain



A43. Cdv

Front BENT photo Sandhurst (1881 – 1883), back printed, beard unkempt, suggest 1880s



A44. Cdv

Front Hewitt Photo 95 Swanston St. (1867 – 1880), back printed

The Webster Album



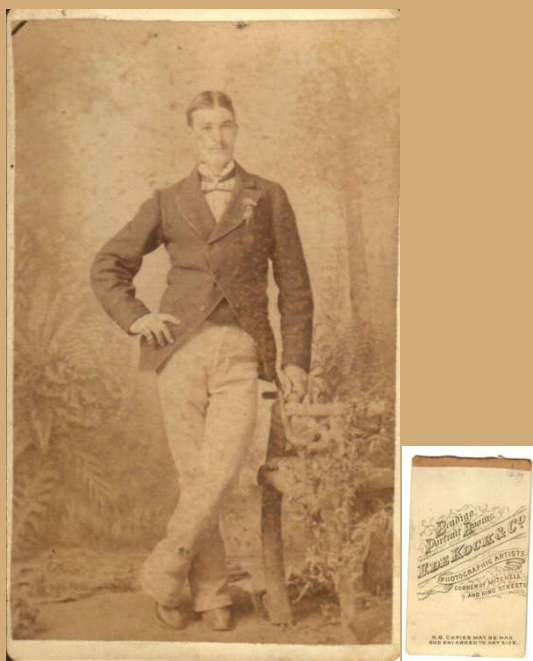
A45. Cdv

Front plain, back printed Thos D Ferris Artist Photographer (1875 – 1881) (1888 – 1891)



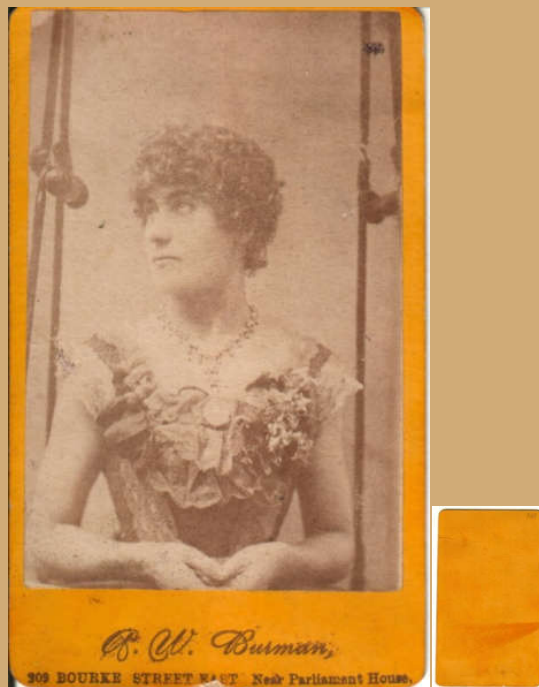
A46. Tintype gem on Cdv card

Front coloured design, back plain



A47. Cdv

Front plain, back printed Bendigo Portrait Rooms F De Kock & Co photographic artists corner Mitchell and King streets (1888 – 1891)



A48. Cdv yellow

Front R.W. Burman 209 Bourke St East near Parliament house (1878 – 1888), back plain

Looks like a stage artist, The dress is not usual for ordinary people.

The Webster Album

That is all the album contains. The next series of photographs are loose photographs that belonged to Dorothy Downie. Some would have been her mother's. Some Cabinet print Photos and cdvs do relate to the photos in the album but there are many postcard photos that are twentieth century. Some of these are likely to be Dorothy Downie's. Few have the people identified.

The Loose Photographs



L1. Cabinet print

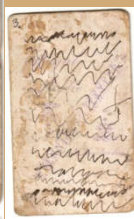
Front Alan Spicer Bendigo (1893 – 1900), back plain



L2. Cabinet print

Front D.Isley Photo Artist, back plain

The Webster Album



L3 Cdv front plain,, back scribble over
Royal Studio, Jennings & Taylor, Australia
E.F. Jennings Narrandera NSW (1884 - 5)



L5 Postcard, Kodak Australia.



L4

Cdv front plain,, back Royal Studio,
Jennings & Taylor, Australia E.F. Jennings
Narrandera NSW (1884 - 5)



L6

Cdv Front plain, back stamped W.P.
Cunningham Photographic indistinct Parker
Cootamundra Indistinct (1888 – 1897).

The Webster Album



From Aileen Ethel Downey
 To Dear Cousin Lizzie
 with fond love.

G. + H. NICHOLAS,
 TRAVELLING ARTISTS,
 HEAD QUARTERS BUNDANOON

L7 Cdv front G.H. Nicholas Travelling artist, back printed G. + H. Nicholas late of Pitt st Sydney. Headquarters Bundanoon 1884). Hand written "From Aileen Ethel Downey To her Dear Cousin Lizzie with fond Love."



Bendigo
Portrait Rooms
F. De Kock & Co
 PHOTOGRAPHIC ARTISTS
 CORNER MITCHELL
 AND KING STREETS
 (1888 - 1891)

L9 Cdv front plain, back printed Bendigo Portrait Rooms F De Kock & Co photographic artists corner Mitchell and King streets (1888 – 1891) (Identical to A 47).

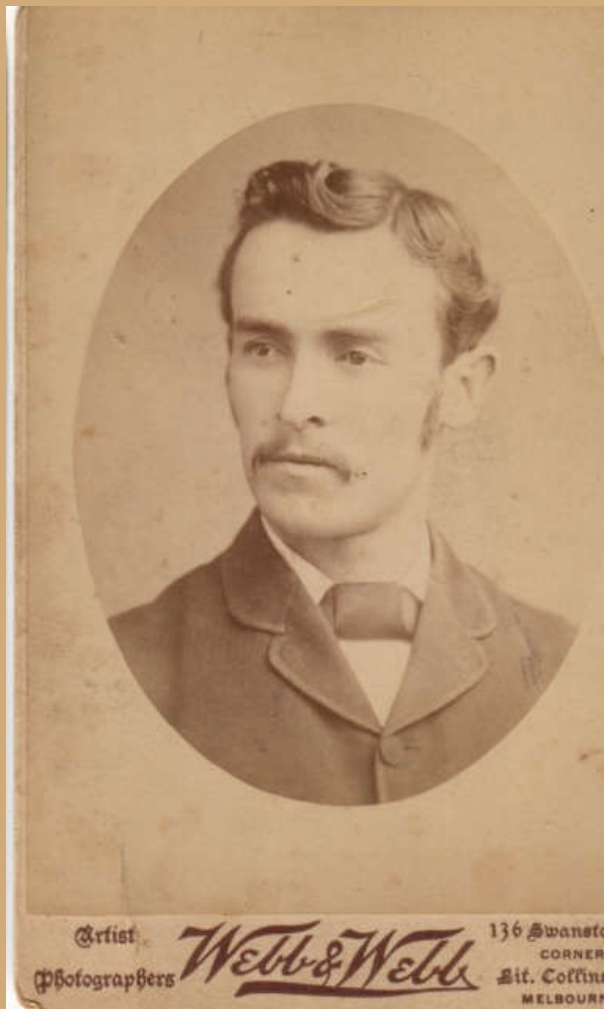
L8 Cdv sqr cnrs

Front plain, back stamped San Francisco Instantaneous Photographic Company



SAN FRANCISCO
INSTANTANEOUS
PHOTOGRAPHIC COMPANY

The Webster Album



L10 Cabinet print, Front Webb & Webb Artist Photographers 136 Swanston St. corner Lit. Collins St. Melbourne (1890 – 98). (a resemblance to A 12 & 40).



L11. Cabinet print

Front and back plain. Scribbled numbers on back

The Webster Album



L12 Removed from Cabinet print card possibly no markings front or back.



L14 postcard (post 1905), front plain, back R Yeoman 116 Bourke St.(1895 – 1920), Melbourne.



L13 postcard (post 1905), plain front, back The Yeoman Studios



L15 Cabinet print, front Bartlett brothers Bendigo (1880 – 1899), back plain, possibly part of Webster family.

The Webster Album



L16 Cabinet print with no markings, Agnes Macdonald nee Webster with daughters Janet and Isabel

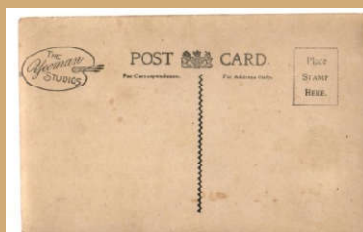


L17 Cabinet print with no markings front or back, Pollie Hansen nee Webster with Edith and James.

The Webster Album

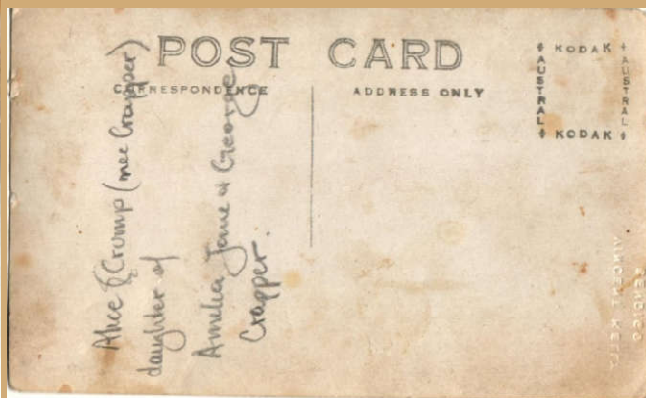


L18 Cabinet print with no markings front or back



L19 Postcard (post 1905) The Yeoman Studios.

The Webster Album



L20 Postcard

Alice Crump nee Crapper, identified by Carrie Hollow



L21. Postcard

Back, George J Janes, Photoman, 328 Smith St. Collingwood.

The Webster Album



L22. Postcard

Dick Morshead, identified by Carrie Hollow.



L23 Postcard

Inscription suggests it may be from Isabel Macdonald the baby's name unknown.

The Webster Album

Loose Webster Photos



Cabinet print

Front R Yeoman & Co 169 Bourke St. East Melbourne (1885 – 1899)



Cdv

Front R Yeoman & Co 139 Bourke St East, Melbourne (1885 – 1899) taken the same day

Possibly Janet and Jane Webster.



Cabinet print

Front and back plain

The Webster Album



Cabinet print

Front, West End Portrait Parlours, 112 & 114 Victoria St. West Melbourne. On back, woman in foreground, Pollie Webster, Married Augustus Hansen.



Studio portrait – Hansen family

Front Edward Sands Williamstown (1896 – 1898)



No label front or back But is the Hansen family.

The Webster Album



Studio portrait

Front Mendelsson 80 Swanston St. Melbourne (1899 – 1900), back handwritten “6183 Johnston”



Studio portrait

Yeoman & Co 116 Bourke St. Melbourne (1895 – 1920)

Webster Women in a studio .

The Webster Album



James Colquhoun Photographer 138 High St. Prahran, Vic. (1896-1900)

Thought to be - back row Alfred Thomas Charles Loveridge, Janet Agnes Loveridge nee Macdonald, Jessie Fawcett nee Webster (aunty of Janet and Isabel), Isabel Macdonald. Front Joy Macdonald Loveridge, Kenneth Macdonald Loveridge, Ian Macdonald Loveridge. Taken circa 1900

The Webster Album

The Reids

The mother with baby in this family photo is perhaps Mary Reid nee Heatherwick the sister of Janet Webster nee Heatherwick. She married Samuel Reid in 1863. I think the couple with the baby are her son and his wife. The Cdv photo is taken with the Reids first child and presumably the mother of Mary or her husband Samuel.

There is a cutting with the death notice of Mary Reid in the Webster Bible no date but it appears to be during a war, probably the Boer War.



The second photo was taken in about 1905 of the whole family.

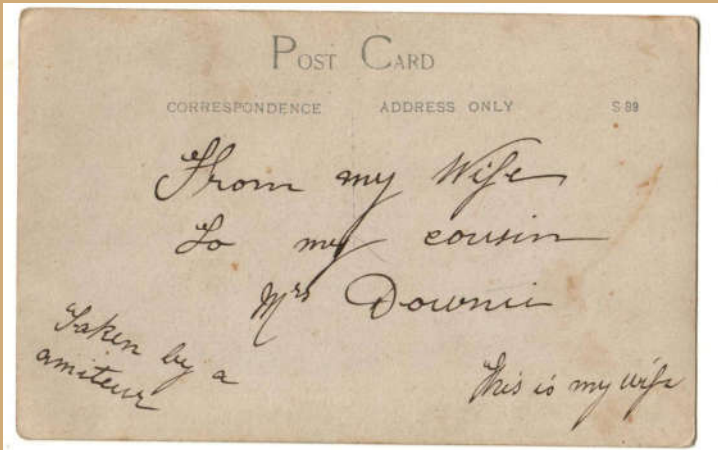
Cabinet print print

Front, Colin Campbell, High Street, Kirkaldy.

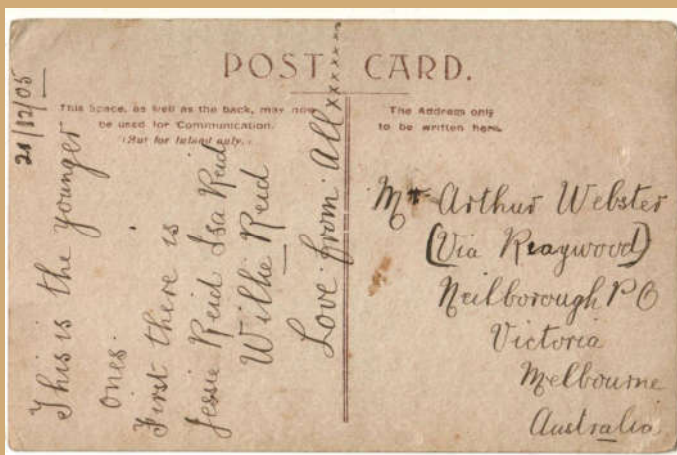
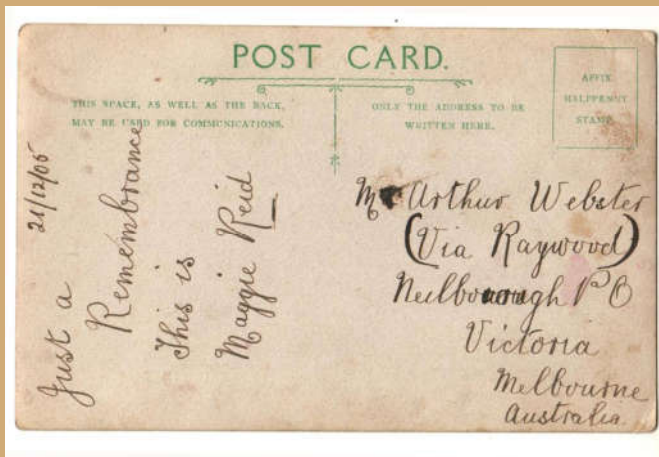


The Webster Album

These are postcards sent about the same time, maybe a year later/earlier. The son of Mary would be the cousin of Mrs Downie (Elizabeth Webster)



The Webster Album



The Webster Album

To confuse things this postcard is in the collection too. It may be the Reid girls a few years later, the dresses look a bit old for ten or so years later.

